

**CAN2**

**CAN1**

white/green pin28  
black 73PIN connector  
(alternative control blinkers  
- emergency light switch)

white 73PIN connector  
orange/brown pin18CANL

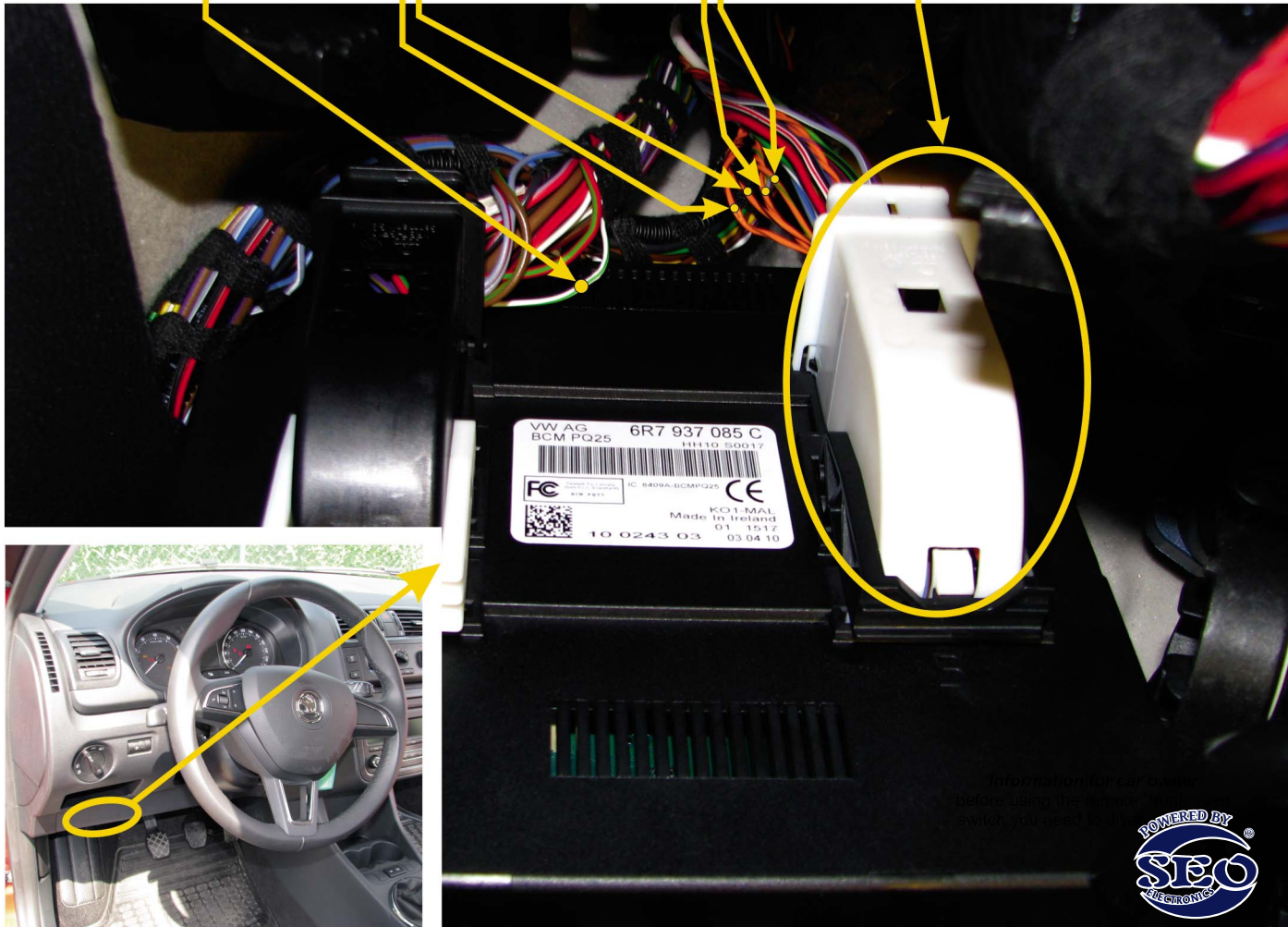
orange/black pin19 CANH  
white 73PIN connector

white 73PIN connector  
orange/brown pin21 CANL

orange/green pin20 CANH  
white 73PIN connector

**VIN:**  
**TMBxxx5Jxxxxxxxxxx**

**+12V red/white pin13**  
white 73PIN connector



Information for car owners  
before using the remote  
switch you need to

