

**CAN1**

black connector I/P-E 39PIN  
white/orange pin25 CANH

yellow/orange pin38 CANL  
black connector I/P-E 39PIN

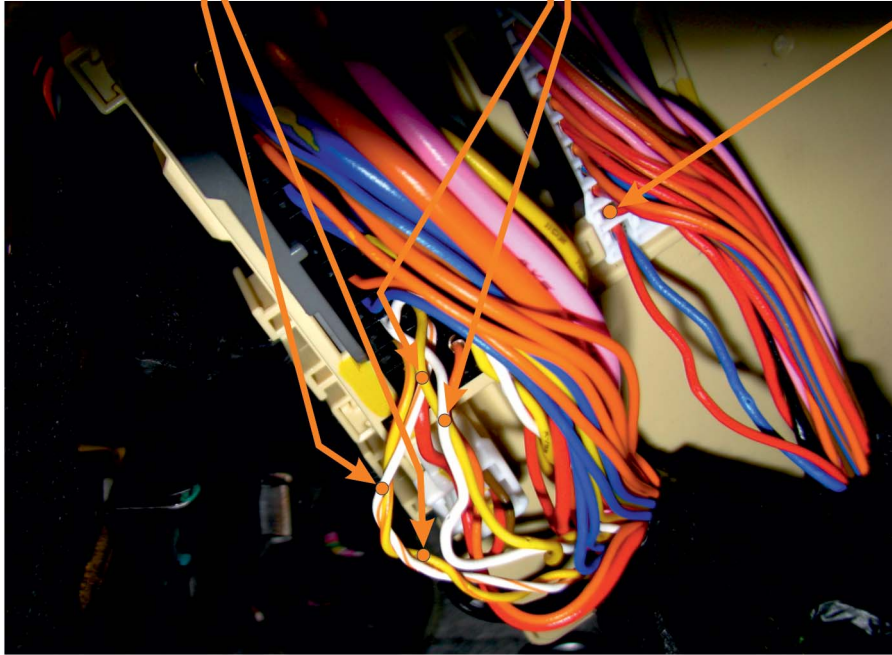
**CAN2**

black connector I/P-E 39PIN  
yellow pin24 CANL

white pin37 CANH  
black connector I/P-E 39PIN

red pin27

white connector I/P-G 28PIN  
(blinkers sequence steering  
- emergency light switch)



**CONTROL MODULE (REAR)**

